



Recommended calling QRGs: 7.028, 10.118/10.128/10.133, 14.058, 18.085, 21.058/21.138, 24.908, 28.058/28.158
FEA Net: 7.026 MHz 2300UTC on Saturdays, 14.054 MHz 0800UTC on Sundays
Newsletter Editor, FEA Net Manager: Nao JO3HPM (jo3hpm@fists-ea.org)
Membership Secretary: Hoz JL1IRB (join-fea@fists-ea.org)
Web Administrator, QSL Manager, Newsletter E-mail Distributor: Harry JL3AMK (webadmin@fists-ea.org)
FISTS members can receive the morsEAsia via e-mail. Please email the web admin with your FISTS#.
Treasurer, Contest & Award Manager: Sugi JK7UST,
<http://www.feacw.net/> or <http://www.fists-ea.org/> (Secondary)

NEW MEMBERS

We're very pleased to welcome our latest members: Hiro, JJ1FXF #15297, Dan, DU7SJF #15298, and Stuart, (no callsign, from Singapore) #15299.

FEA-100 AWARD - SUGI, JK7UST, #7178

We are pleased to announce the FEA-100 Award!

PURPOSE:	The purpose of this award is to deepen mutual friendship among members and enhance activities.
START DATE:	0000 UTC 1st January 2021. All logged QSOs must be made on or after the start date.
MODE:	CW
RULES:	The FEA-100 Award is earned by working 100 points of FEA members. FEA member is worth one point. FEA affiliated club stations (JE7YTQ #15100, JO1ZZZ #15200, JL3YOC #15300) are worth three points. FEA National Club Station (JL3YMV #15000) is worth five points.
EXCHANGE:	RST
LOGS:	For each QSO logged: Date / Call sign / Band / RST / Time in UTC / FISTS Number / Points. Logs may be in ADIF or CSV format.
GENERAL:	Not only all FEA members, but also worldwide FISTS members can submit. There is no charge.
ENTRIES TO:	email to awards@fists-ea.org . Logs must be received on or after 1st January 2021.

Please click here (<http://www.feacw.net/mbr/fea-list.cgi>) to show the list of members who belong to the East Asia chapter. It is great idea to use FEA recommended calling QRGs listed above. You can use the Internet for assistance. Following sites will be useful.

FEA QRV Information: <http://www.fists-ea.org/qrv/qrvinfo.cgi>
N8FQ FISTS sked page: <http://www.n8fq.org/sked/index.php?board=fists>
FEA-100 Award: http://www.feacw.net/qrv/FEA-100_Award.htm

FEA CROSSING - NAO, JO3HPM, #15008

QSO on the FEA net takes place in groups. On the other hand, some members who want one-on-one QSO have commented that it's getting harder and harder to find members on the bands these days. So we decided to start new event called FEA Crossing. By concentrating time and frequency, it eases to find members who want one-on-one QSO. We look forward to your participation.

OBJECTIVE: To enjoy one-on-one Morse code communication.
TIME: Every Friday 23:30 to 00:30 UTC
FREQUENCY: 7.025 to 7.030 MHz
PARTICIPATION: All amateur stations
CALL: CQ FISTS or CQ
HOW TO: Call a CQ at this time and frequency. Or respond to the station sending the CQ. We recommend using the FEA QRV Information: <http://www.fists-ea.org/qrv/qrvinfo.cgi>

FEA CROSSING: <https://www.fists-ea.org/qrv/info.htm#x>

HIRO, JJ1FXF, #15297

Hi, members of FISTS East Asia. My name is HIRO, de JJ1FXF firstly licensed in 1976. And after some long QRT, I've come back to HAM a few years ago because I happened to find my TRIO TS-520X in my daughter's closet, wanted to repair it and say "HELLO CQ" again.

To make a long story short, now the TS-520X is working well and I have been enjoying HAM for a few years so far. For the details of my repair and maintenance for classic RIGs, please visit my QRZ.com page and click the link below. (SRI, written in Japanese though)



My beloved RIGs. I mainly use TRIO TS-520X + FT2100Z(mod 200 W) for 40 m. On the desk, those are RIGs I was repairing but now they are all fine, from the left to right, YAESU FT-401S (mod 100 W), TRIO TS-520X (mod 50 W), TRIO 9R-59D & TX-88D, so called 59D Line. And in the left rack, from its top, left to right, DRAKE MN-4 (manual antenna tuner), YAESU FL-2100Z (linear amp), TRIO TS-120V (10 W) and National RJX-601 (50 MHz AM/FM). Then underneath, from the left to right, again RJX-601 and TRIO TS-510D and its speaker/power unit. And the bottom of the rack, the above one is TRIO TS-520X (mod 50 W) with external VFO, my main RIG connected to FL-2100Z, and the blow one is TRIO TS-520S (100 W) with AT-200 (antenna tuner).

Then, the STAY HOME has invaded us and there was no way to travel during the Golden Week, a Japan's series of national holidays for a week. So I started thinking of doing something new to me, that was CW that I hadn't tried in my whole HAM life.

However, the VFO of TS-520X has some QRH and is not good enough for CW. I decided to buy a new radio for CW, that is ICOM IC-7300, a SDR - Software Defined Radio which has an elegant noise reduction and various IF filters by software which means I can control the parameters of them as I want. Yes, it's a dream radio for me, especially for CW reception, I suppose.

Now I am trying to learn the head copying and the head keying which means I do not need a piece of paper to jot down while receiving codes and spelling words to transmit. Well, need a few more months or maybe years, I guess. So I joined FISTS East Asia to see my progress on CW.



My keys, GHD GT-705A at the left, HI-MOUND HK-709 at the center, and BK-100 at the right, ICOM IC-7300 is for the CW mostly.

If you hear my call sign on the air, please feel free to call me at any time and many times. It will be my best practice for sure, and of course it's a great fun to know you more by dits and dahs

Lastly but not least, I would like to say thank you very much for the key stations who take control of the FEA NET every Sunday. Also I'm very much appreciated for those who listen to my clumsy keying every week.

Thank you very much for reading my self-introduction. See you soon at the FEA NET!

MY FAVORITE RADIO - MANABU, JE1RZR, #15020

I'd like to introduce my radio. I have four radio manufactured by SONY and I use them every day though all radio have been used for long time.

ICF-2001D is famous for one of the best set among broadcast listeners. It covers from 150 kHz to 29,999 kHz and FM, Air band. I asked my parents to buy it when I was a high school student in order to listen to the program for university entrance exam on HF band. I got a second hand model. The price was some 40,000 yen I believe. It was first time for me to get a receiver shows the frequency in digital. So I was really excited. I brought it not only to domestic cities where I live like Osaka, Tokyo but also abroad like Mongolia, Russia and Uzbekistan with all my life since I got it back in 1986. Through over 30 years usage it needs repair sometime. I don't remember how many times I opened it and took soldering works. It has a long ferrite core bar antenna in side so the ability for receiving on Middle Wave band is excellent. Nowadays I use ICF-2001D in my bed room. The programmable timer works perfect sounding nostalgic music from neighboring Asian countries as lullaby and wake-up alarm clock telling fresh news by NHK every early morning.



I take a breakfast in dining room watching news program by simple AM/FM radio ICF-380. This was a gift from one of my friend who visited Mongolia when I was studied there in 1991-93. He worked as producer in one broadcast station of JA7 area and his mission was to take a small TV program introducing the country. I helped him as guide and translator. So I've used this radio almost 30 years. Also I use it outdoor when I have gardening works.



ICF-2001D



ICF-380

ICF-SW22 is a small radio covering MW, 7 SW and FM bands. I bought it at shop in Niigata when I had a short business trip to Far East part of Russia departure from Niigata airport more than 20 years ago. Since then when I travel to somewhere I put it in my bag and enjoy the local stations program. It has no digital frequency counter so you have to know the frequency of broadcast station you want to listen to. But on the other hand it's fun to meet unexpected station's signal dialing knob by chance. I replaced its loudspeaker and still it works really well.

It takes more than 2 hours to commute from home to office by train. And I walk from one stop prior station than the most nearest to office around 30 minutes when the weather is fine. In that occasion my reliable gear is SRF-M98. I listen to the radio program like NHK, AFN, or other program depends on my feeling walking the street. It has 7 memories for each AM and FM so easy to change the program. I used it more than 10 years without any troubles.



ICF-SW22



SRF-M98

All four radio have its own character and I'm really happy with all of them.

IC-705 - TAK, JS1QIZ, #15150

About two months have passed since I started to use IC-705, a 1kg portable all band (160 to 0.7 m), all mode transceiver. Now, I can say I like it.

Ten watts, max power when connected to 13.5 V power supply, seems enough in good condition. Of course, I operate CW most of the time, but using 10 watts FM mode on the 0.7 m also seems comfortable.

Five watts, max power when the internal battery is used, are also sufficient for making CW contacts in the field. One battery lasts 3 hours or allows making 50 report-number-only connections in the contest. Of course, the battery is strong enough to enjoy chats from the field if the condition is good. Two batteries would be enough for the one full-day operation in the field.



Band scope, which covers all the CW bands, is particularly useful in finding stations in the contest and open frequency in the non-contest operations. I initially thought it consumes considerable battery power. However, soon I changed my mind because I found quick and concise operations aided by the band scope contributes more to the longer battery life.

One kg of the body weight is a bit of load in the mountain trail if a tent and cooking stove/pots are accompanied. However, I think the trail walk with this TX is worth trying because making a chat having a hot meal and coffee alone in the field can be an “experience.”

Now, I am trying some forms of antennas in the field with the IC-705. If I would find one which can be recommended, I will report it in the newsletter.

73/72 Tak, JS1QIZ

TARO, JR0QWW, #5578

Recently, our family is fond of climbing mountain. Last September, we went to Kakuda-yama near my home, and climb there with my ID51, D-Star transceiver. Although, in such case, with my family, I couldn't enjoy radio enough, but I think it is important for me. I had 5 QSOs in 145 MHz, FM and got point of SOTA.



ANTENNA MAINTENANCE - AKI, JL1GEL, #15147

My antennas on my house have become un-aligned and tilted, and the needle on the rotator-controller has become not to indicate the right direction of the antennas due to several hits of typhoons in a past couple of years.



For the repair of outer wall of my house, scaffolding is set up. Taking this opportunity, I asked a maintenance company to have my antenna system fixed because the roof is steep and I have a fear of heights.



It was light rain but they have fixed the antennas in about two hours.



Now I can enjoy radio again using these antennas as before. See you soon on the air, 73!

THE TALE OF A HEX BEAM - GEORGE, 7J1ATG / VK4BGR / GW3YTC, #15076

It took me a long time and a significant effort to finally get my G3TXQ (6 Band) Hex Beam up into the air..... but in the end it was well worth the trouble.

I bought my G3TXQ Hex Beam from Anthony (MW0JZE) in mid-summer 2017 whilst on a business trip to the UK. I had it delivered to the QTH of my friend James (MW0JHC - my GW 3 Remote station is located within the Garden Shed at his QTH on the ISLAND OF Anglesey (Wales - UK).



Final location - HEX Beam view to the West from my IZU QTH. (My 10 mtr long Pro Whip - mounted on to of an 8 mtr tree to the Left Hand Side)



Location of Anglesey Island (X = GW Remote)

Between jobs, I had a few days “free time” - so with the help of James (MW0JHC) we decided to “TEST” the Hex Beam on the nearby Sand Dunes. The set-up was simple: Mounted about 3 mtrs above ground just a hundred metres or so from the Irish Sea complete with a Spanner for the “ARMSTRONG ROTATOR”.

As we wanted to try a “TEST” over a longish period of time (a couple of days at least) and we did not want to “rough it” we made use of the Motor home that James has and uses for his travels all around Europe. Oh and yes ... we parked beside a very nice Pub/Restaurant (“Oyster Catcher”) where we retired to “frequently” to discuss the results we had observed ... over a Pint (or THREE) of Draft Guinness!



HEX Beam “Test” Set-up



Motor home / Pub & Restaurant and view of Pro Whip 10 mtr high Vertical (Reference Antenna)

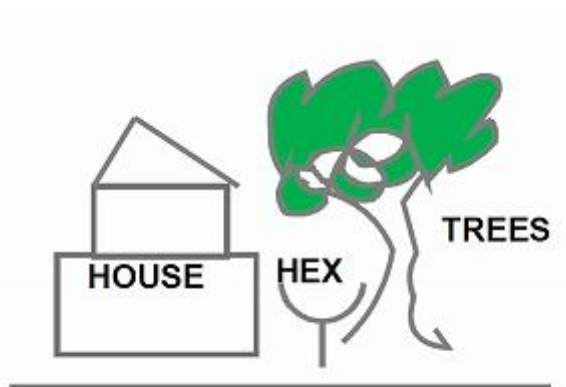
The Pro Whip Vertical I had used for some years on my GW Remote and also in VK and JA and had found it to be a “reasonably good” antenna - so it was a good choice as a reference antenna for these tests. We used both CW and SSB during the tests and with an old trusty TS440S (100 W o/p) and we spent many hours on air over a couple of days/nights comparing the results of the Pro Whip Vertical to the HEX Beam. The results were amazing and in many cases - using the HEX Beam we received very good signal reports 57 to 59++ (SSB) and 599+++ (CW) from many Stations around Europe and in North America many of which we could not even hear on the Pro Whip Vertical!! I was very impressed with the performance of the G3TXQ HEX BEAM.

So - the HEX Beam was afterwards “packed up” and I brought it back to Japan with me some weeks later in August, 2017. My “plan” was to install the HEX Beam at my IZU QTH but I knew it would not be that easy to do this!

The main problem at IZU was that the part of the house where I wanted to install the HEX Beam was quite close to nearby trees and there was no way that a fully erected HEX beam (with diameter of nearly 7 mtrs - without the 7 MHz DP option) could be moved vertically through the space available without having it at a 90 degree tilt. I had anticipated this problem so had included the “Extreme WX” option (extra bracing of the Hex Arms) and also the “Tilting Plate” option.

However - at that time in 2017 / 2018 / 2019 and until early 2020 - most of my work was mainly overseas in Australia/NZ and Europe/USA and I was rarely back in Japan for more than a week or so at anyone time. So I had no time to try and install my HEX Beam as I had intended to.

So in the Spring of 2018 the HEX was “temporarily” installed on a short pole (1.6 mtrs above Ground) amongst the trees! From the Spring of 2018 until June 2020 the HEX remained in that position but was actually performing quite well with a 2 or 3 “S Point” advantage over my Pro Whip Vertical!!



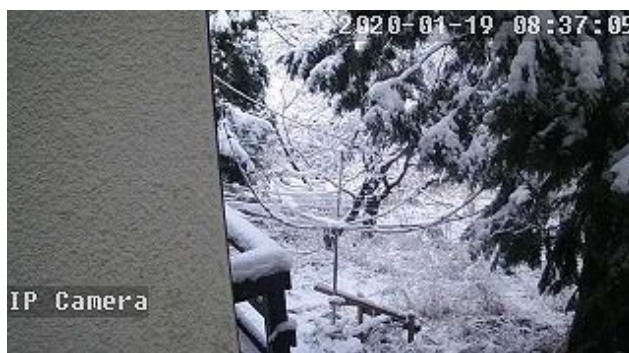
“Temporary” installation of HEX Beam on the Ground. Yellow marker so that I could confirm the HEX Direction via IP Camera on 2nd Floor Balcony when working my IZU Remote.



Spring 2019 still there!



2019 Rainy Season - in the clouds ... still there!



Winter 2020 still there!

When I returned to Japan from a business trip to Australia in March 2020 - I did not know that international travel - as we knew it - would effectively end due to the Corvid Virus! Since that date I have been working remotely from my IZU QTH and “finally” had time to tackle the “raising of the HEX BEAM”!! With the “Extreme WX” kit fitted and “TILT Bracket” the raising of the HEX BEAM began..... I was working alone so it was very slow process and had to be fitted in between online meetings and report writing etc. “Bit by bit” the HEX - at a 90 Degree angle - was raised through the available gap between the house and the nearby trees.



First Stage...



Second Stage...



Fifth Stage...



Block n Tackle



Sixth Stage...



..... and - Finally..... In place



Support arrangements



The bearing from an old Water Pump from my "Delica Van" in VK4 served as a rotating base!



The scaffolding coupling serves as a brake and the grippers as my "ARMSTRONG ROTATOR". (Being close to my Operating Position - I can quickly rotate the HEX from the 2nd Floor Balcony)

My IZU QTH is approx. 560 mtrs above sea level and the Hex Beam is now approximately 8 mtrs above the ground and the performance is quite amazing! There is often a 7 or even 8 "S Point" advantage over my Pro Whip Vertical and even the steep rise in the ground to my South is not a problem for QSOs to Australia / New Zealand (something that was only rarely possible with my Pro Whip Vertical).



Hex Beam View to the North West - over Mishima



HEX Beam View to the West over Suruga Bay



HEX Beam View to the North (Fuji-san)

I had also purchased the folded 7-MHz Dipole option that can be fitted on top of the HEX BEAM (this increases the diameter significantly and would have been impossible to raise the Hex with this option fitted) but have yet to fit that in place - maybe one day but in the meantime that folded DP is performing well as a separate DP on 7 MHz.

I am very impressed with the HEX BEAM performance and strongly recommend it to anyone. It is very well made with high quality materials and Anthony (MW0JZE) who manufactures these HEX BEAMS at his Llanelli QTH in GW-land has been a fantastic help. Having the HEX Beam finally "up in the air" has meant that I can enjoy DX - even Band CONDX are "so so". I am looking forward to see how the HEX performs when Band CONDX improve further and to trying the 6mtr Band when open. Enjoy your radio 73s / George

FEA CW NET RESULTS: NO. 811 TO 823 - NAO, JO3HPM, #15008

No.	Date (Y/M/D)	Time (UTC)	Freq. (MHz)	Controller	Participants
823-2	2020/9/27	0800-0832	14.053	JO3HPM	JE1RZR, 7J1ATG/2, JL1GEL, JJ1FXF
823-1	2020/9/26	2300-2356	7.026	JL1GEL	JO3HPM, JE1RZR, JA4IJJ, 7J1ATG/2, JS2AHG, JJ1TTG, JJ1FXF
822-2	2020/9/20	0800-0840	14.054	JE1RZR	JL1GEL, 7J1ATG/2, JO3HPM, JE1TRV, JJ1FXF
822-1	2020/9/19	2300-0002	7.0263	JA4IJJ	JE1RZR, JL1GEL, JS1QIZ, JJ1FXF, JS2AHG, 7J1ATG/2
821-2	2020/9/13	0800-0815	14.053	JE7YTQ	7J1ATG/2
821-1	2020/9/12	2300-0000	7.026	JS1QIZ	JA4IJJ, JL1GEL, JK7UST, 7J1ATG/2, JJ1FXF, JO3HPM
820-2	2020/9/6	0800-0841	14.054	JL1GEL	JE1RZR, JJ1FXF, 7J1ATG/2, JK7UST
				JE1RZR	
820-1	2020/9/5	2300-2356	7.026	JE7YTQ	JE1RZR, JA4IJJ, JS2AHG, 7J1ATG/2, JL1GEL, JO3HPM
819-2	2020/8/30	0800-0853	14.053	JE7YTQ	JO3HPM, JE1RZR, 7J1ATG/2, JS1QIZ, JL3AMK, JL1GEL, JJ1FXF
819-1	2020/8/29	2300-2357	7.0265	JE1RZR	JA4IJJ, JL1GEL, JO3HPM, JS2AHG, 7J1ATG/2, JA1NUT, JS1QIZ, JJ1FXF
818-2	2020/8/23	0800-0841	14.054	JE1RZR	JL1GEL, JO3HPM, JK7UST, JS1QIZ, 7J1ATG/2
818-1	2020/8/22	2300-0010	7.026	JA4IJJ	JS2AHG, JR0QWW, JL1GEL, JJ1FXF, JE1RZR, 7J1ATG/2, JS1QIZ
817-2	2020/8/16	0800-0830	14.049	JO3HPM	JS1QIZ, 7J1ATG/2, JE1RZR, JJ1FXF
817-1	2020/8/15	2300-2352	7.0065	JS1QIZ	JK7UST, JL1GEL, JA4IJJ, JE1RZR, 7J1ATG/2, JO3HPM
816-2	2020/8/9	0800-0827	14.0545	JL1GEL	JE1RZR
816-1	2020/8/8	2300-0020	7.026	JL1GEL	JK7UST, JA4IJJ, 7J1ATG/2, JS2AHG, JS1QIZ, JE1RZR, JJ1FXF, JR0QWW, JO3HPM
815-2	2020/8/2	0800-0903	14.054	JO3HPM	JE1TRV, JE1RZR, 7J1ATG/2, JL1GEL, JJ1FXF, JS1QIZ, JI1XJB/6, VK6RR, DU7SJJ
815-1	2020/8/1	2300-0010	7.026	JE7YTQ	JL1GEL, JE1RZR, JS2AHG, JS1QIZ/1, 7J1ATG/2, JA4IJJ, JJ1FXF, JO3HPM
814-2	2020/7/26	0800-0840	14.054	JE1RZR	7J1ATG/2, JK7UST, JL1GEL, JO3HPM, JS1QIZ, JE1TRV
814-1	2020/7/25	2300-0000	7.026	JL3YMV	JS2AHG, JE1RZR, 7J1ATG/2, JS1QIZ, JL1GEL, JJ1FXF, JK7UST
813-2	2020/7/19	0800-0820	14.054	JE7YTQ	JE1RZR
813-1	2020/7/18	2300-2355	7.026	JE1RZR	JS1QIZ, JA4IJJ, 7J1ATG/2, JL1GEL, JO3HPM, JS2AHG
812-2	2020/7/12	0800-0831	14.053	JL1GEL	JE1RZR, VK6RR
812-1	2020/7/11	2300-0015	7.026	JA4IJJ	JS2AHG, JE1RZR, 7J1ATG/2, JL1GEL, JJ1FXF, JI1XJB/6(JH2HTQ, JG1BGT)
811-2	2020/7/5	0800-0844	14.053	JO3HPM	JE1RZR, JK7UST, 7J1ATG/2, JS1QIZ
811-1	2020/7/4	2300-0004	7.027	JS1QIZ	JO3HPM, 7J1ATG/2, JJ1FXF, JE1RZR, JA4IJJ, JH2HTQ, JL1GEL, JK7UST

FINALE

We would like to ask you to do a few things to make FEA net more enjoyable. (1) Newcomers first: FEA net is a place to support newcomers who want to learn how to communicate in International Morse code and keep practising together. If you are a newcomer, you are welcome to just exchange reports in the beginning. Please feel free to join us. (2) Simple check-in: Please help us get the first round started as soon as possible. (3) Fun conversation: Sometimes a newcomer can be too busy just talking about themselves. But if you have room to listen to others, please try to reply to their conversation as much as possible, and enjoy chatting. Thank you for your cooperation. 7/3/88 and stay sober de Nao.